



# Strawberry's View Point

## May Highlights:

### Point The Way

Chamber Board Meeting 7 a.m.-Franklin Hotel	5/2
City Wide Garage Sales	5/6&7
Ewalu's 50th Anniversary	5/7
Strawberry Point Lutheran Home Picnic	5/13
City Wide Clean-up	5/14
Chamber Board Meeting	5/16

**Wilder Museum Hours:  
Memorial Day-Labor Day  
1-4pm**

**563-933-4615**

**Also open weekends in  
May, September,  
and October!**

### You're Invited!

**What:** Strawberry Point Lutheran Home Picnic

**When:** Friday, May 13

**Time:** 11-1 p.m.

**Where:** Lutheran Home

**Call 563-933-6037 for more information**



### EWALU's 50th Anniversary Open House

Saturday, May 7, 2011 from 9 a.m.- 3 p.m.

Tour the new cabins and come celebrate 50 years of camp ministry!



If you would like an event in the June newsletter, please call 933-4417 or email: chamber@strawberrypt.com

**Moser School of Dance and Gymnastics** is again offering a summer tumbling camp in Edgewood! This camp will be mornings June 13-17 at the Ed-Co High School. We invite all girls and boys ages 3-adult to register for a fun week! Email: [dmoser@iowatelecom.net](mailto:dmoser@iowatelecom.net) or [lukat@iowatelecom.net](mailto:lukat@iowatelecom.net) with Moser Classes in the subject line, for a form or questions. We are also accepting registrations for fall Tap, Jazz/Hip-Hop, Ballet, and Gymnastics classes in all our locations, including Strawberry Point on Fridays after school. Register soon for both summer and fall to guarantee your spot!

### City-Wide Garage Sales: May 6th and 7th

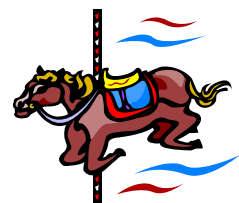


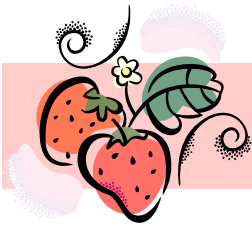
## Volunteers Needed for Strawberry Days

The chamber is looking for volunteers to help out with Strawberry Days on Friday and Saturday, June 10 and 11th. If you would like to volunteer in any way, please contact Amanda Whittle at 563-

944-4417 or email chamber@strawberrypt.com. You can also go to [www.strawberrypt.com](http://www.strawberrypt.com) and fill out a volunteer form. Every year, Strawberry Days would not be a success without the help

of our wonderful volunteers.





**Strawberry Point Chamber of Commerce**

P.O. Box 404

Strawberry Point, IA 52076

Phone: (563) 933-4417

Email: [chamber@strawberrypt.com](mailto:chamber@strawberrypt.com)

[www.strawberrypt.com](http://www.strawberrypt.com)

[www.strawberrypt.com/chamber/chamber.htm](http://www.strawberrypt.com/chamber/chamber.htm)

Find Strawberry Point on Facebook!

# Strawberry Days 2011

## “Everything Strawberry”



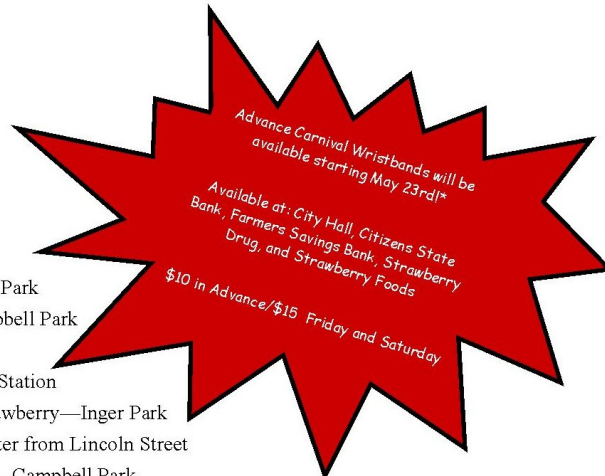
### Friday, June 10th

- All Day Carnival
- 1:30 Registration for Pet Show—Inger Park
- 2:00 Pet Show—Inger Park
- 4:00-7:00 Lion's Club Dinner—Fire Station
- 5:00 Registration for Kiddie Parade—Inger Park
- 5:30 Kiddie Parade—Inger Park
- 6:00 Performance by Fusion Dance Works—Inger Park
- 8:00 Fireman's Street Dance—East Mission Street
- 9:00 Entertainment at Chaser's and Rod & Cal's

*Please check with establishments for more details*

### Saturday, June 11th

- All Day Carnival
- 6:30-10:00 VFW Pancake Breakfast
- 7:00-Noon Mud Run Registration at Industrial Park
- 7:00-7:45 Mini Triathlon Registration—Campbell Park
- 8:00 Mini Triathlon—Campbell Park
- 9:00 BBQ Cook Off Registration—Fire Station
- 11:00-12:00 Crowning of Little Miss & Mr. Strawberry—Inger Park
- Noon Parade Line Up on Westwood—Enter from Lincoln Street
- Noon 4th Annual Volleyball Tournament—Campbell Park
- Noon-4:00 Classic Car Display/Cruise—East Mission Street at the 4 corners
- 1:00 Parade “Everything Strawberry”
- 2:00-6:00 Mud Run in the Industrial Park
- 2:30-7:00 Entertainment at Inger Park
  - 2:45—Moser's School of Dance & Gymnastics
  - 3:30—Lee Cole (Magician/Comedian)
  - 5:00—3<sup>rd</sup> Offense band
- 3:00-4:00 BBQ Judging-Inger Park
- 4:30-6:30 Drunk Driving Simulator—Inger Park
- 5:00-7:00 Free Strawberries and Ice Cream at the Fire Station
- 7:00-11:00 S.A.F.E. Teen Dance & Pool Party with Drunk Driving Simulator
- 9:00 Lipstick Slick at Rod and Cal's
- DJ at Chaser's



*\*ALL TIMES ARE APPROXIMATE AND SUBJECT TO CHANGE\**

*\* Carnival wristbands allow children to access all rides*

*\*\*Strawberries and Ice Cream are first come, first serve*

Tractor Pull will still be at Campbell Park on Sunday from 11:00 a.m. until the last pull!

*Strawberry Days 2011 is sponsored by the Strawberry Point Chamber of Commerce  
Any questions regarding Strawberry Days 2011 should be directed to 563-933-4417 or  
[chamber@strawberrypt.com](mailto:chamber@strawberrypt.com)  
[WWW.STRAWBERRYPT.COM](http://WWW.STRAWBERRYPT.COM)*